



Profile | Materials | Collections

MIALUXY

[www.mialuxy.eu](http://www.mialuxy.eu)

***The MIALUXY brand is part of TTD GROUP***

**Head Office TTD GROUP: TTD sro.,** Prague, Czech Republic.

- Showroom & Office: 3rd floor, Vincom Plaza Long Bien, Ha Noi, Vietnam
- Outlet store: 38A Thoi Hoa str., Vinh Loc, Binh Chanh, Ho Chi Minh, Vietnam

 **Hotline: +84971507222**

[www.ttd-group.com](http://www.ttd-group.com)

**MIALUXY S.A**

Established in: Valencia, Spain

Date: 10.08.2016

Office: Ciudad de Liria, 84 PJ. Fuente del Jarro 46988 Paterna, Valencia, Spain

[www.mialuxy.eu](http://www.mialuxy.eu)

# About us

Founded in 2014, MIALUXY – a prestigious brand under TTD Group in Spain – stands as the embodiment of a bold vision: to craft exquisite lighting creations that transcend function, becoming timeless works of art infused with individuality, sophistication, and soul. As a true pioneer in the realm of Bespoke Lighting, MIALUXY does not merely design lighting fixtures, but curates journeys of light – where discerning clients collaborate with master artisans to transform personal lifestyles into radiant expressions of beauty.

What distinguishes MIALUXY is the seamless harmony between Eastern sensitivity and Western elegance, elevated by an uncompromising selection of the world's most refined materials: Swarovski crystals, Schöler Crystal, traditional Czech crystal and glass, and pure brass fittings sourced from Spain and Italy. Each masterpiece is a symphony of craftsmanship and innovation – contemporary in design, yet forever honoring the heritage of artisanal tradition.

In 2020, while continuing to nurture partnerships with renowned OEM manufacturers in Spain and the Czech Republic, MIALUXY unveiled its flagship showroom in Valencia, Spain – a sanctuary of luminous artistry. At the same time, we established a dedicated research, design, and assembly atelier in Vietnam, further affirming our stature as a leading name in bespoke decorative lighting, entrusted to illuminate prestigious villas, grand hotels, luxury resorts, and distinguished residences worldwide.

For MIALUXY, bespoke is not merely personalization – it is the pinnacle of artistry and distinction. We believe that every space deserves its own light-born narrative, and every client is, in essence, an artist – shaping a world where illumination becomes the purest form of inspiration.

**MIALUXY S.A**

Established in: Valencia, Spain

Date: 10.08.2016

Office: Ciudad de Liria, 84 PJ. Fuente del Jarro 46988 Paterna, Valencia, Spain



# INTERIOR DECORATIVE MATERIALS



# BOHEMIA

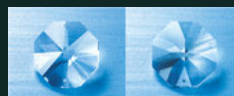
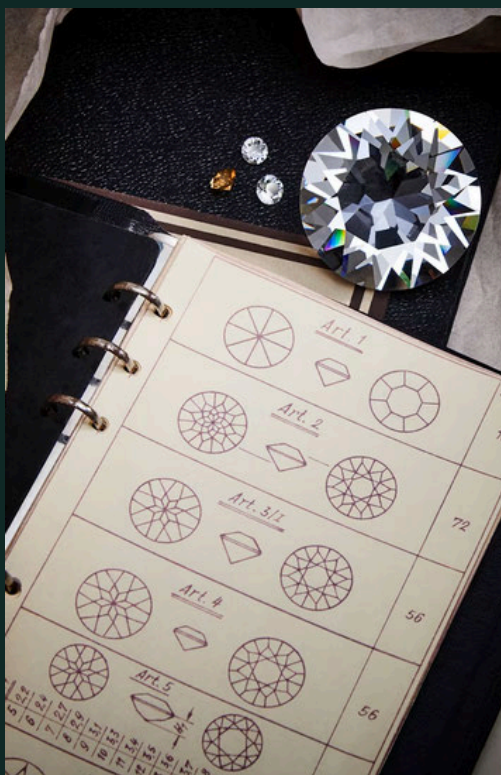
*Bohemian crystal products include both clear and colored crystal, all hand-blown and hand-shaped without the use of machinery, featuring elaborate and highly intricate forms. Czech crystal is widely regarded as an artistic symbol and represents an important traditional craft of the Czech Republic, admired and esteemed worldwide.*



# LIGHTING CRYSTAL

*Thousands of shapes of prisms, bobeche, centerpieces, arms, drops, rods, plates, pinning-material etc. are available.*

*Lighting crystals are available in the basic clear color as well as in coated colors or solid colors.*



*highest technical  
standards*



*individuality and charm*



*great price-quality ratio*



*high quality at very  
favorable prices*



*glamorous brilliance*





	COATINGS		COLORS		CRYSTAL	
transparent	AB		ALEXANDRITE		CLEAR	
	AFLAME		AMETHYST		FROSTED	
	AMBER		AQUAMARINE			
	ANTIQUE		EMERALD			
	GOLD		JET			
	SILVER		ROSALIN			
non-transparent	BB		RUBY			
	BW		SAPPHIRE			
	OG		SMOKE			
	OS		TOPAZ			
	VL					
	VM					

# Colors & Coatings

# Inspiration Collections

*Mialuxy is proud to present the Inspiration Collection – a refined convergence of contemporary light art and traditional craftsmanship.*

*Featuring hand-crafted crystals made by renowned Bohemian crystal masters, this collection is not merely a series of lighting fixtures but a gallery of luminous sculptures that bring a unique mood to every space.*



MIALUXY



## BESPOKE LIGHTING

*The fluidity and grace of installation art, combined with expressive artistic language, are fully conveyed through the bespoke lighting pieces we design exclusively for our clients.*





## NATURE

### An endless source of creative inspiration

*Driven by the desire to bring nature into living spaces, handcrafted crystal is the ideal material to realize this vision—celebrated for its rich diversity of colors, its uniquely expressive forms, and the distinct signature of the artisan who breathes life into each creation.*









# Airy Inspirations

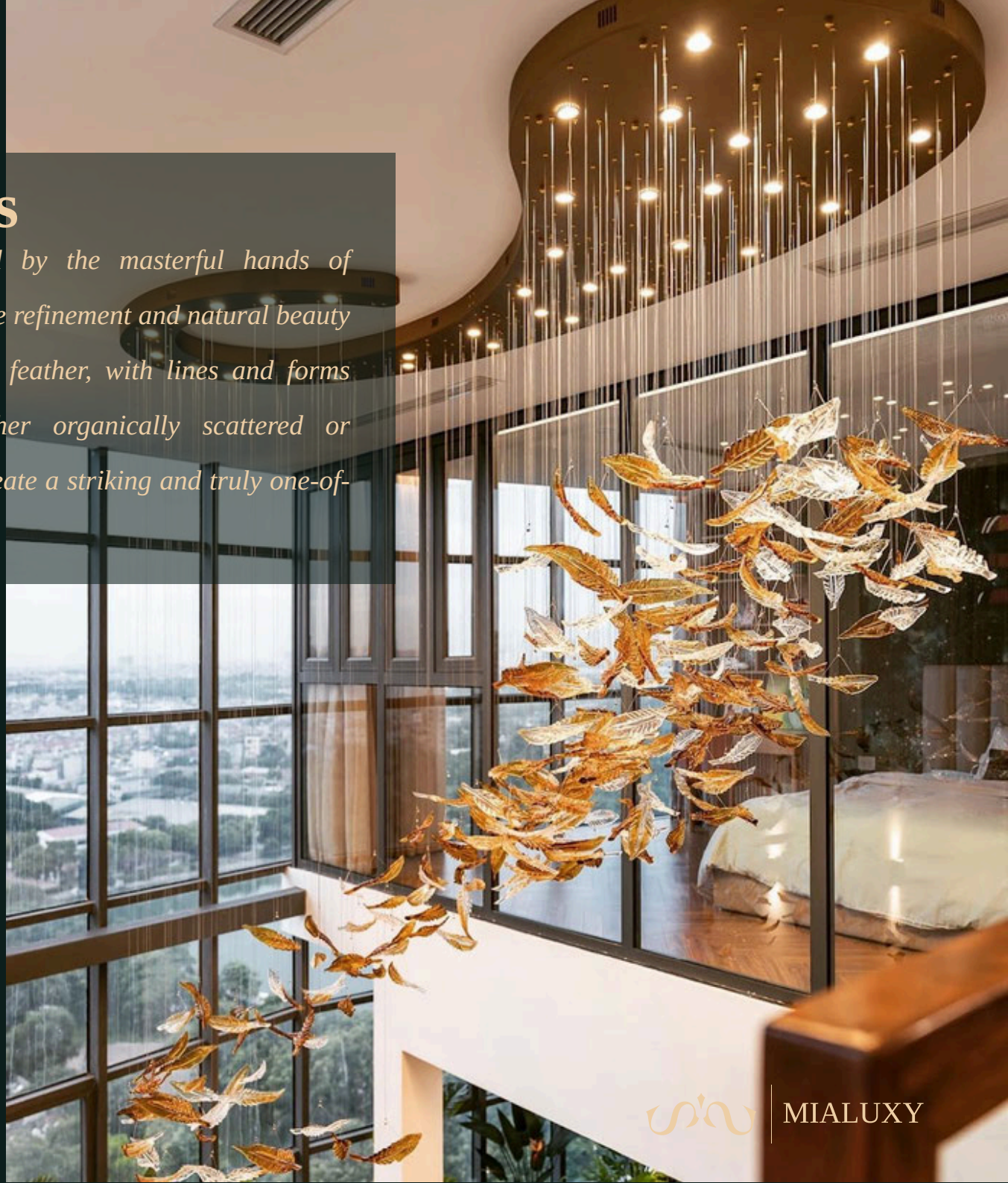
*The multicolored feathers are handcrafted by the masterful hands of Bohemian crystal artisan Martin Stefanek. The refinement and natural beauty of handcrafted design are revealed in each feather, with lines and forms entirely unique from one another. Whether organically scattered or thoughtfully arranged within a space, they create a striking and truly one-of-a-kind visual presence.*



Amber



Honey











**PRIVATE VILLA**  
*Hanoi - Vietnam*






**PRIVATE VILLA**  
*Hanoi - Vietnam*





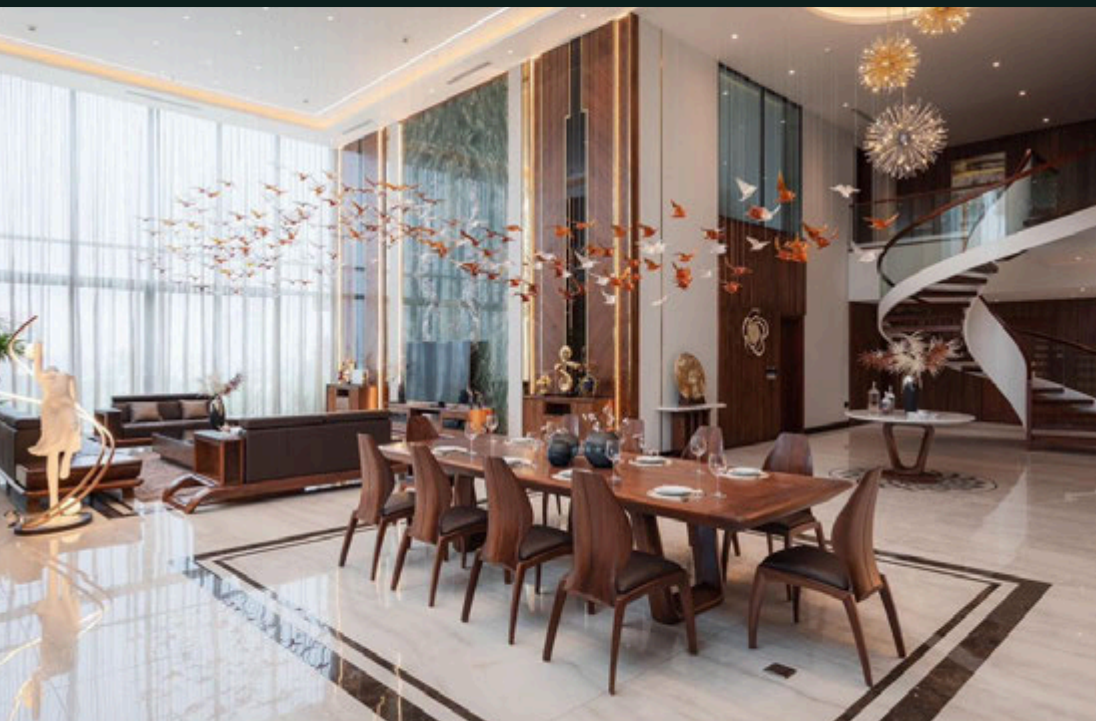


*"Each creation in Mialuxy's Inspiration Collection is the result of exceptional craftsmanship and unwavering dedication to quality. We believe that light is not only meant to illuminate, but also to evoke emotion, delight, and profound beauty within every space.*

*By blending contemporary design with traditional crystal-making techniques, the Inspiration Collection transforms the finest raw materials into unique works of art that surpass all expectations in interior design.*





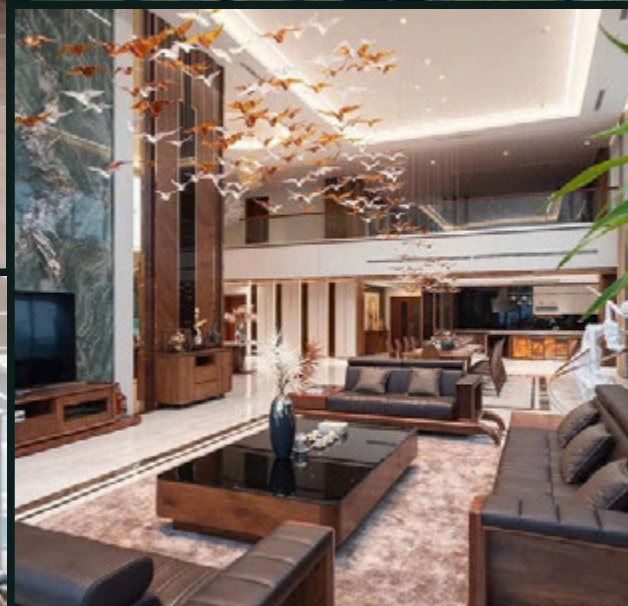
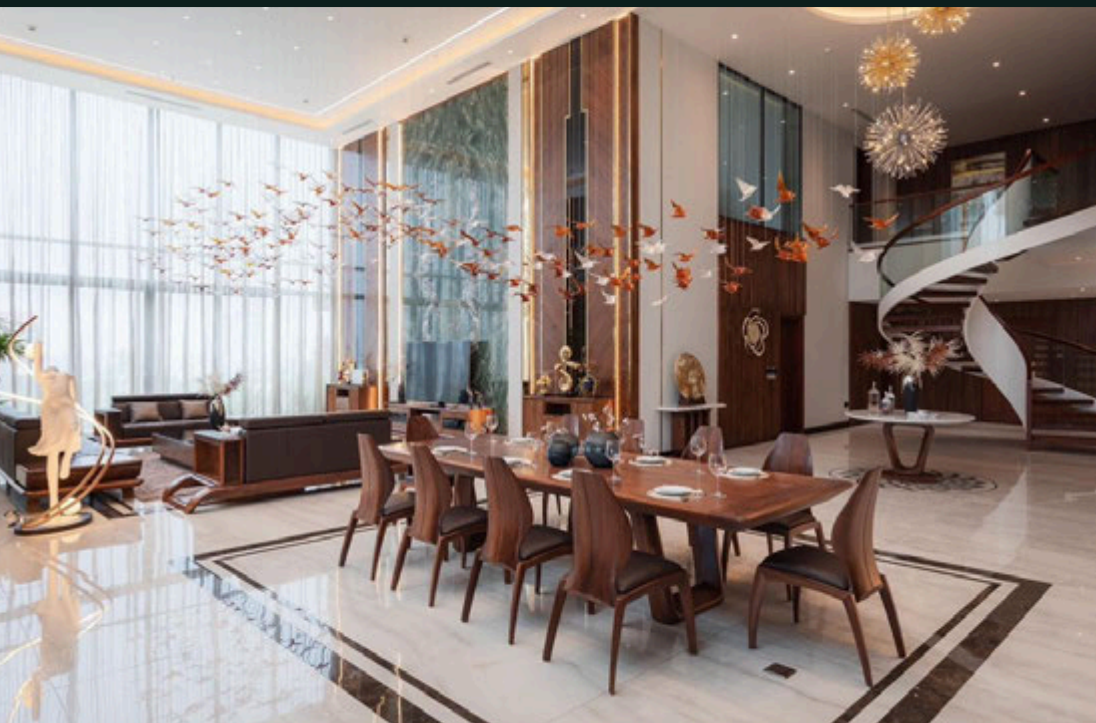


*Handmade Bird CZ Crystal Parts  
by Martin Sterfanek  
\_Crystal Artist*



**PENHOUSE**  
Hanoi - Vietnam





*Handmade Bird CZ Crystal Parts*  
*by Martin Sterfanek*  
*\_Crystal Artist*



**PENHOUSE**  
*Hanoi - Vietnam*





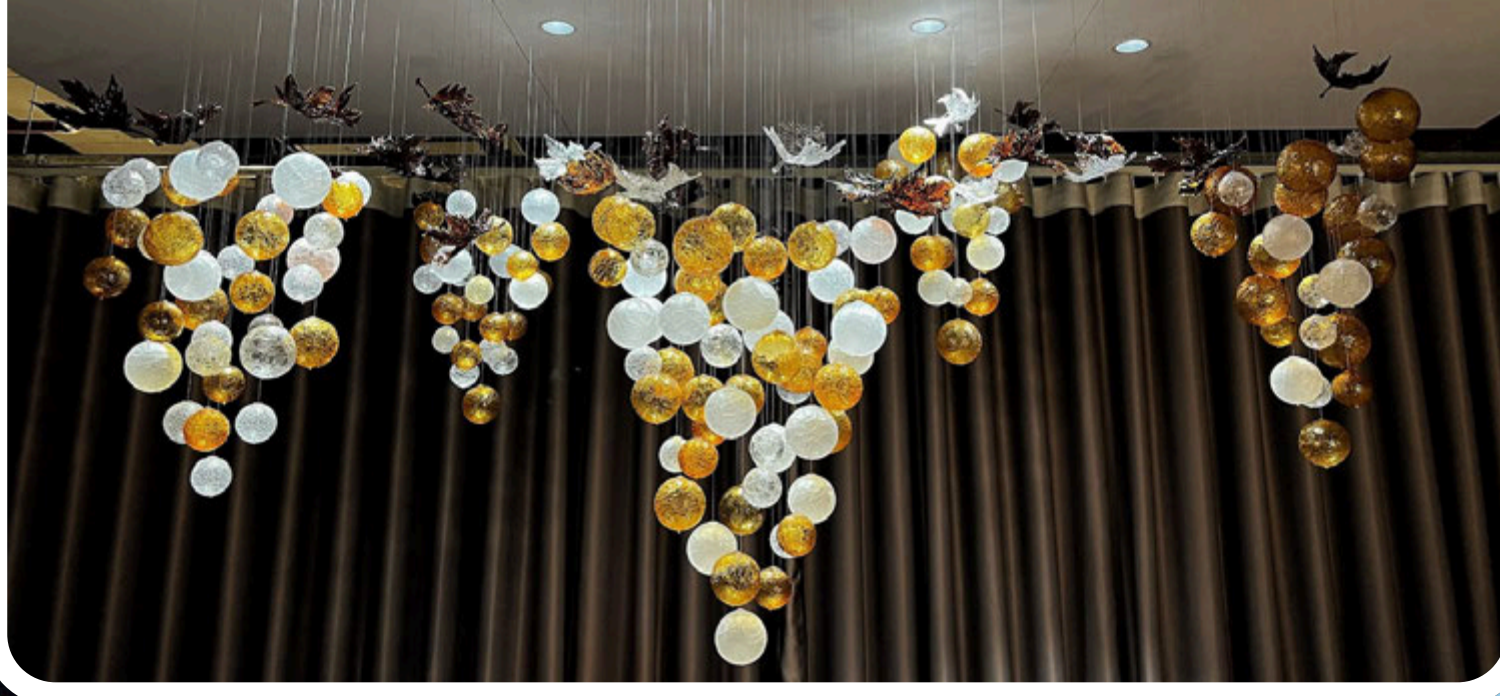












*Bohemian artisans use diamond cutting wheels to carve intricate, multidimensional patterns into the glass, while the final polishing process is achieved by immersing the crystal in acid baths, creating the distinctive clarity and brilliance for which Bohemian crystal is celebrated.*

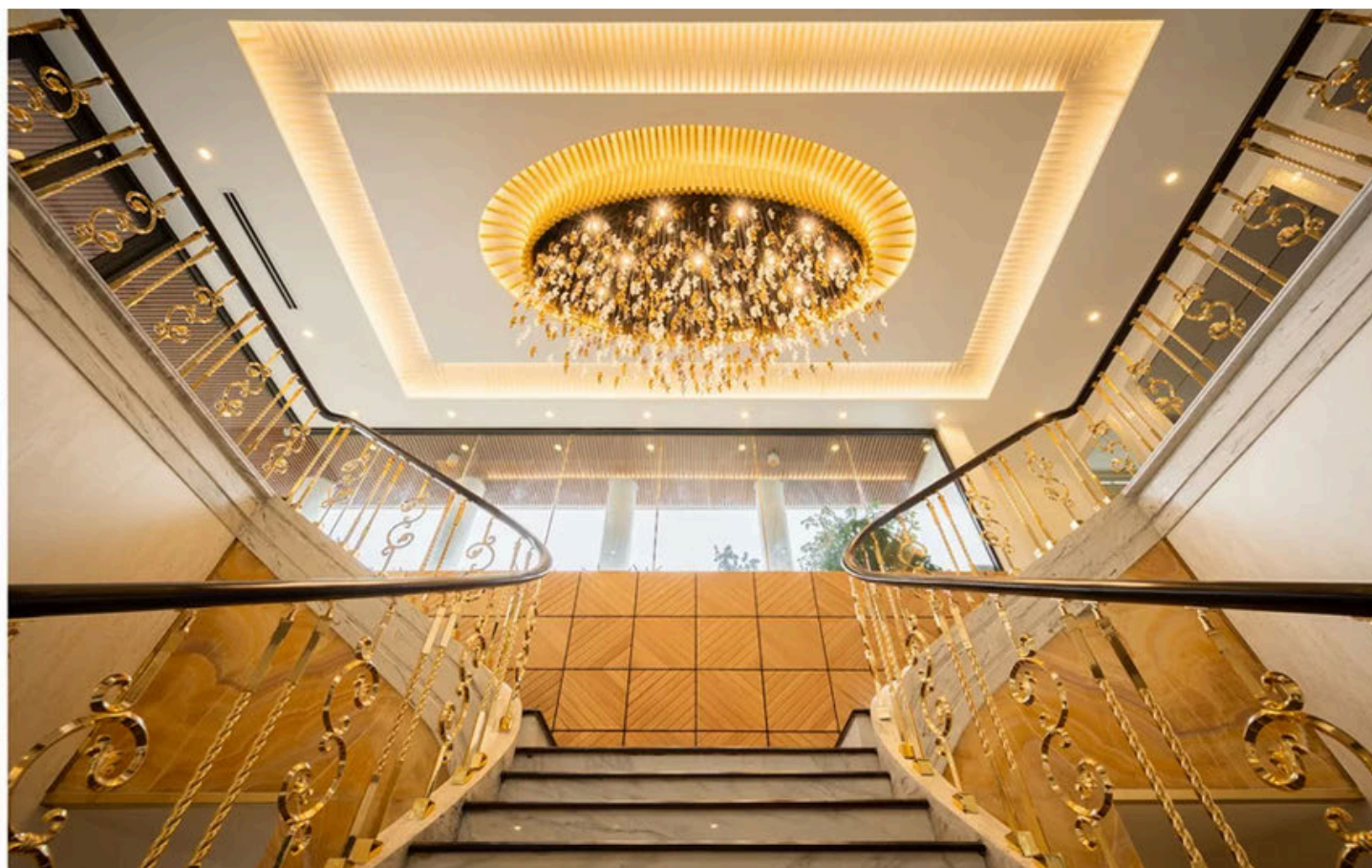
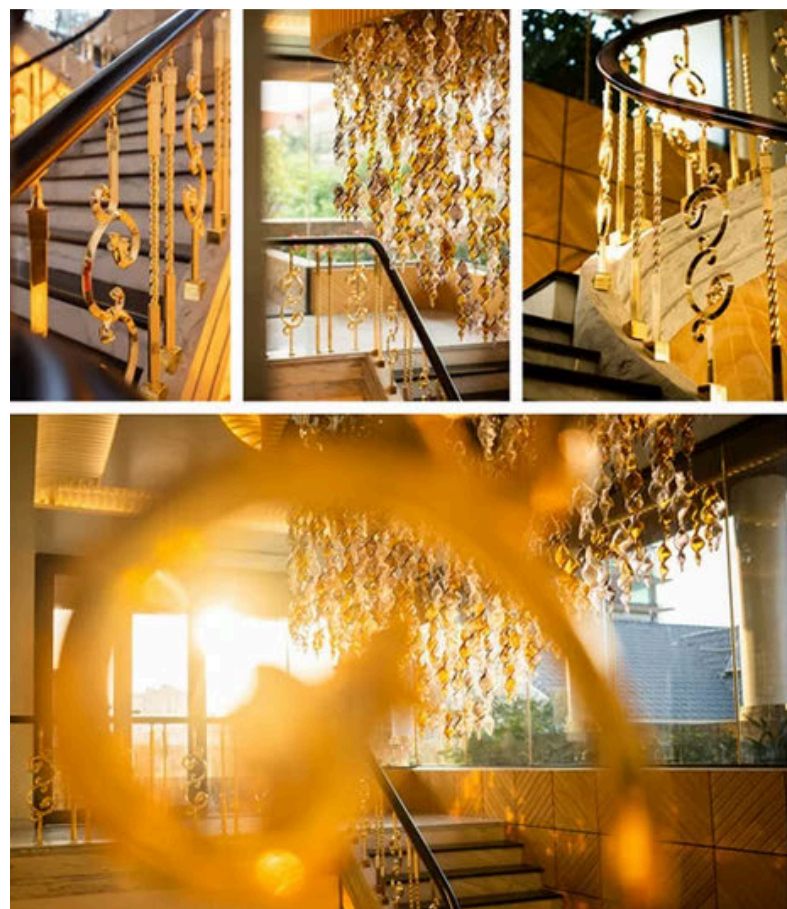




## BESPOKE LIGHTING with BOHEMIA CRYSTAL

*The craft of handmade crystal production in Bohemia, Czech Republic, boasts a long and rich history. Known as Bohemian Crystal, this industry has existed for over 800 years and is renowned for its exceptional craftsmanship, refined techniques, and boundless artistic expression.*





HARRACHOV-459  
Hai Phong - Vietnam







**HARRACHOV-459**

*Hai Phong - Vietnam*

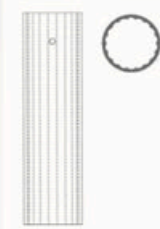




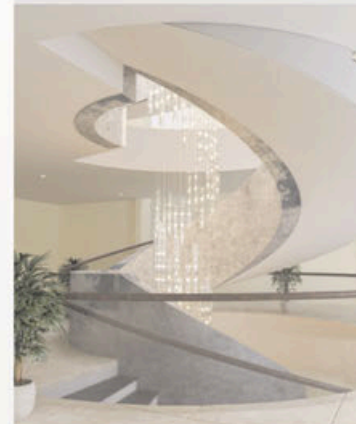




# SPIRAL TUBES



**Style:** Spiral layout  
**Lamp:** Scholer Crystal tubes  
 D80xL600~1000mm x 139pcs  
**Materials:** Stainless steel, clear crystals  
**Wattage:** 556 x 1.8W LED 3000K



1







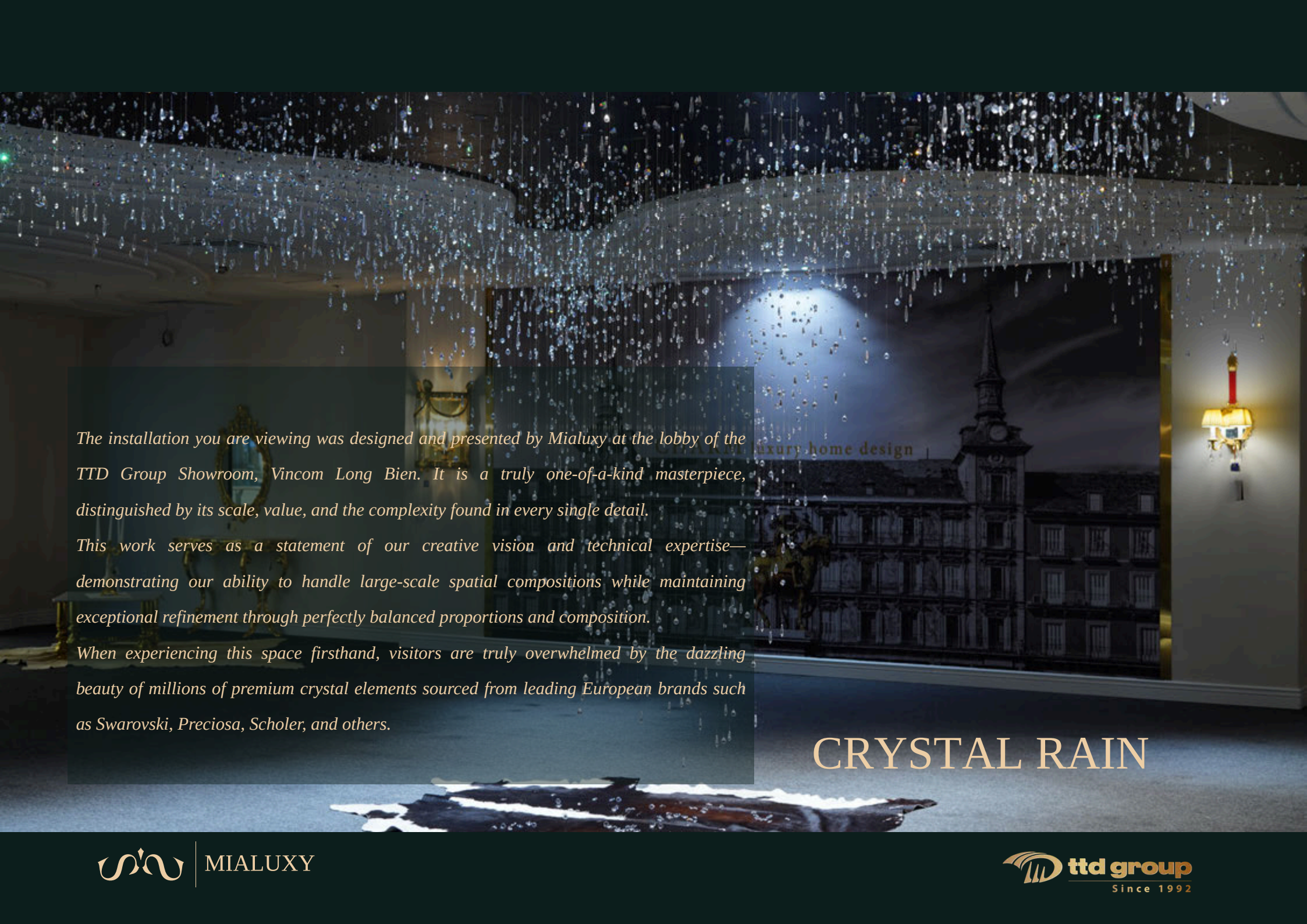












*The installation you are viewing was designed and presented by Mialuxy at the lobby of the TTD Group Showroom, Vincom Long Bien. It is a truly one-of-a-kind masterpiece, distinguished by its scale, value, and the complexity found in every single detail.*

*This work serves as a statement of our creative vision and technical expertise—demonstrating our ability to handle large-scale spatial compositions while maintaining exceptional refinement through perfectly balanced proportions and composition.*

*When experiencing this space firsthand, visitors are truly overwhelmed by the dazzling beauty of millions of premium crystal elements sourced from leading European brands such as Swarovski, Preciosa, Scholer, and others.*

## CRYSTAL RAIN



# HERMAN ROYAL HORSES

*Eight exceptional red crystal horses, crafted through 260 hours of intricate weaving and soldering, adorned with 5,400 gold-leaf and floral details covering the bodies and lamp arms, and set with 3,100 Preciosa chaton crystals...*

A perfect fusion of Eastern beliefs and spirituality with the artistic value of handcrafted Bohemian crystal; the Herman – Royal Horses chandelier brings to life the image of eight horses (the “Eight Horses” motif in Eastern culture), symbolizing success and prosperity.

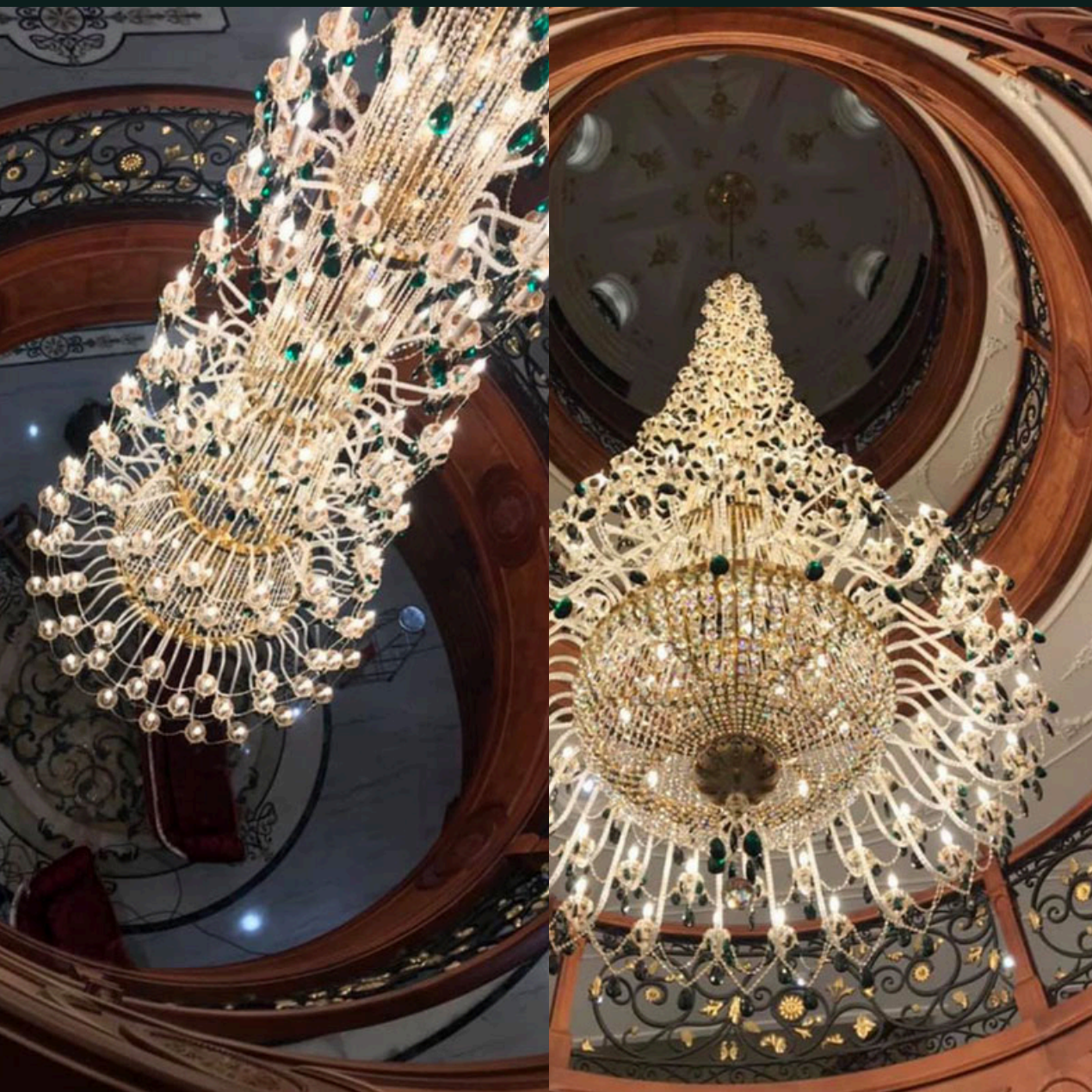
The piece also embodies a unique cultural convergence between Asia and Europe, as crystal and chandeliers are emblematic European art forms dating back to the Middle Ages.



**PRIVATE VILLA**  
Quang Ninh - Vietnam







# **MIAL - EMERALD 17**

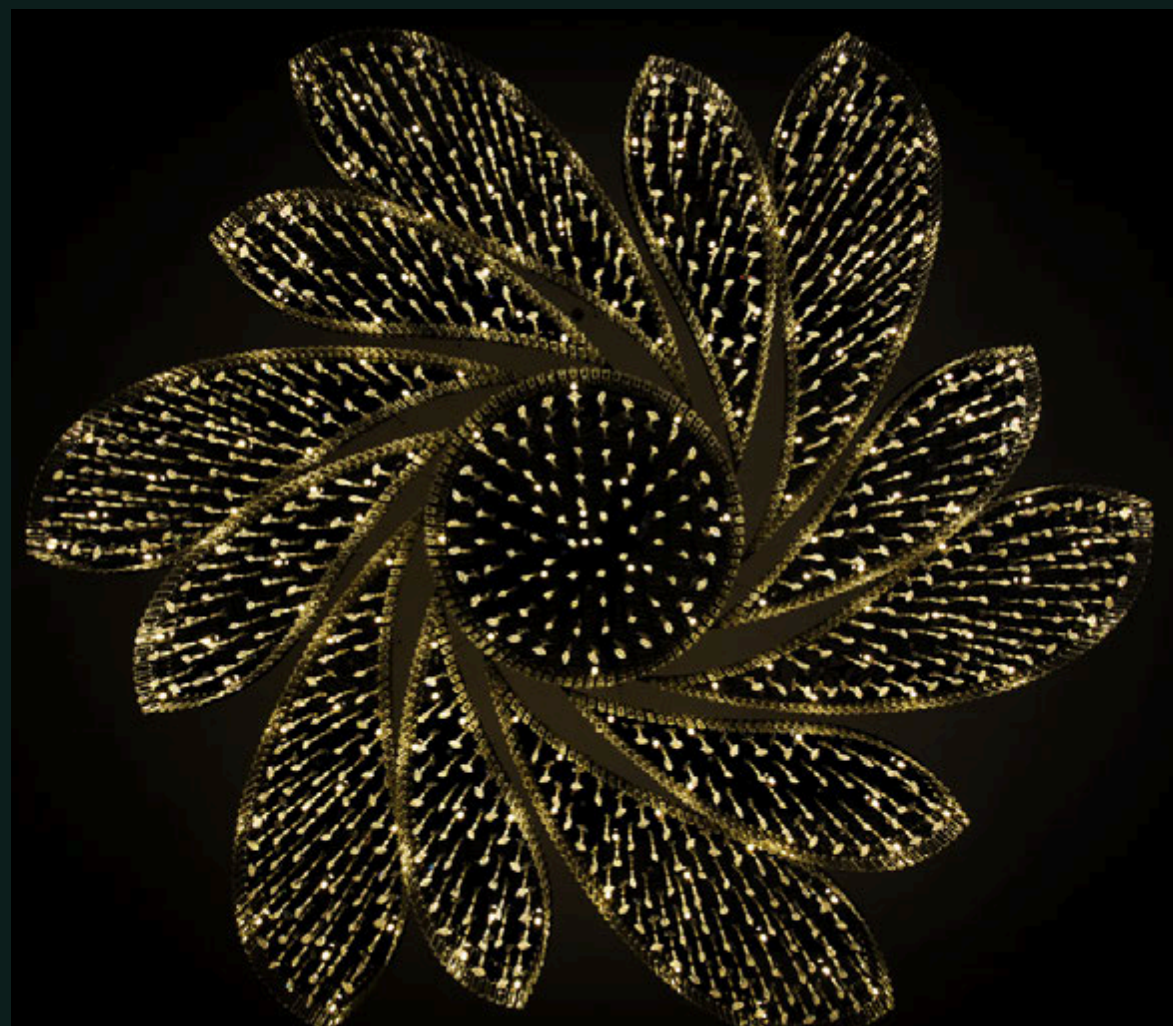
- H.9000,D.2100cm;
- E14x 198+40 - LED4w
- Clear/Emerald/Gold7



## **PRIVATE VILLA**

*Ho Chi Minh city - Vietnam*





A decorative lighting project inspired by the very name of the project; Lotus is installed in the grand lobby of Senna Hotel, Hue – Vietnam.







**HONEY**

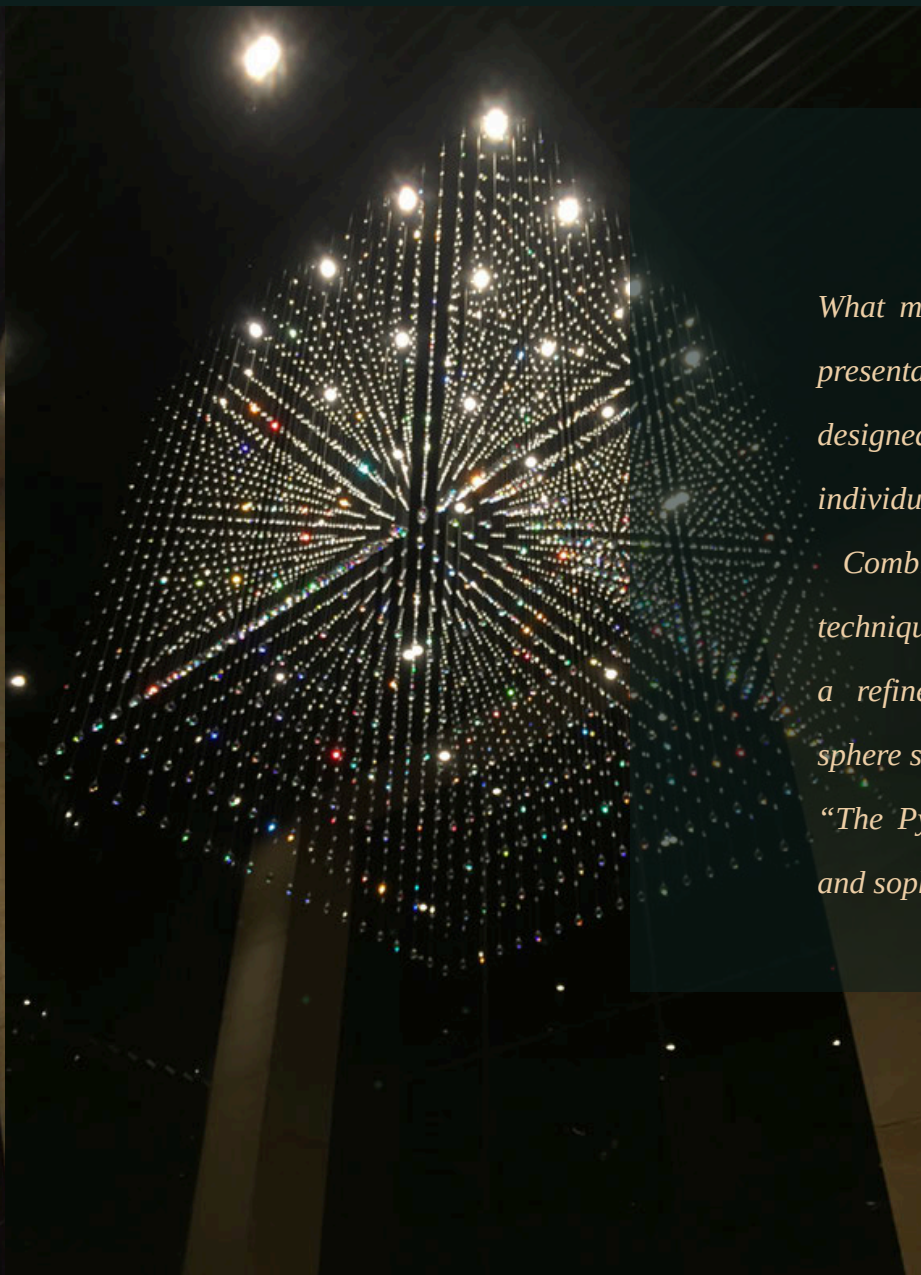
Duplex Apartment - Mandarin  
Hanoi, Vietnam











# Pyramic

*What may seem like a simple process of stringing and presentation actually required Pyramic to be meticulously designed in terms of the size, weight, and spacing of each individual crystal bead.*

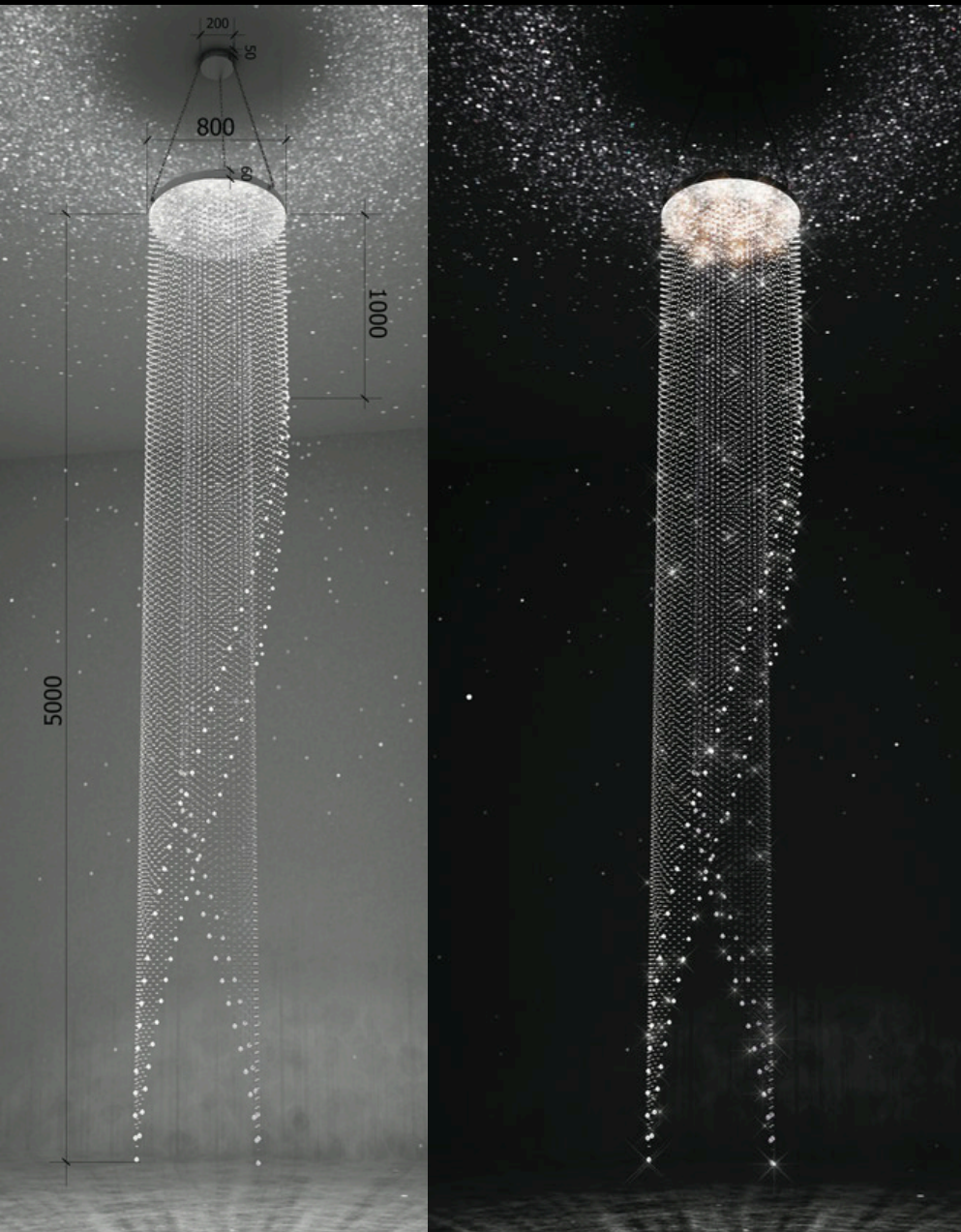
*Combined with TTD Group's advanced execution techniques, all of these elements come together to create a refined focal point—harmonious, like a luminous sphere suspended and glowing in midair.*

*"The Pyramic cube knows how to showcase its luxury and sophistication from every angle."*

CONINCO Tower  
Hanoi, Vietnam







*With Mialuxy, crystal beads go beyond mere decorative elements of magnificent chandeliers—they possess the ability to shine independently, in their own unique way.*

*Design by Mialuxy*



MIALUXY



*Continuing with fluid, shimmering crystal beads,  
these designs are perfectly suited for double-  
height spaces with limited floor area.*

*Design by Mialuxy*



MIALUXY







# TWIST 40

The Mialuxy Twist 40 double-height pendant chandelier features a five-tier design with dimensions of 120 × 280 cm, creating a striking and elegant focal point for the space.

It incorporates 396 Scholer crystal rods from Austria, combined with 40 E14 light bulbs, delivering a shimmering and refined illumination.

Crafted with a solid steel structure and finished in a luxurious gold tone, the Mialuxy Twist 40 harmonizes seamlessly with a wide range of architectural styles in Vietnam—especially in tall, double-height spaces with a relatively compact footprint.



MIALUXY







<<TEXT>>

Lorem ipsum



MIALUXY







## SENOV Collection

The SENOV Collection by MIALUXY, originating from the Czech Republic, is a perfect fusion of refined design and premium materials.

Every detail within this collection is crafted from Czech crystal, delivering a radiant and sophisticated aesthetic.

The collection offers two design options:

- *SENOV 6-25: a double-height chandelier measuring 120 × 220 cm, equipped with 16 E14 bulbs;*
- *SENOV M6-25: a compact pendant light for entrance lobbies or low-ceiling areas, sized 80 × 50 cm and fitted with 8 E14 bulbs.*

Both designs provide high-quality illumination and are well suited to luxurious interior spaces. In addition, Mialuxy offers customized complementary solutions, including wall lights designed to match the collection, tailored to clients' specific requirements.







#### SENOV 6-25

- Brand: MIALUXY
- Origin: CZ (Czech Republic)
- Dimensions: 120 × 220 cm
- Light source: 16 E14 bulbs
- Material: Czech crystal







### SENOV M6-25

- *Brand: MIALUXY*
- *Origin: CZ (Czech Republic)*
- *Dimensions: 80 × 50 cm*
- *Light source: 8 E14 bulbs*
- *Material: Czech crystal*





# SEMILI

H. 60 cm x D. 70 cm

Bóng: 9 x E14



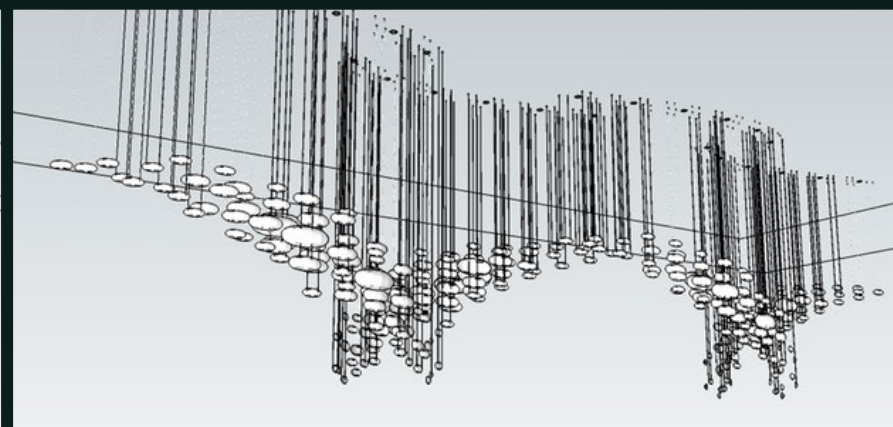
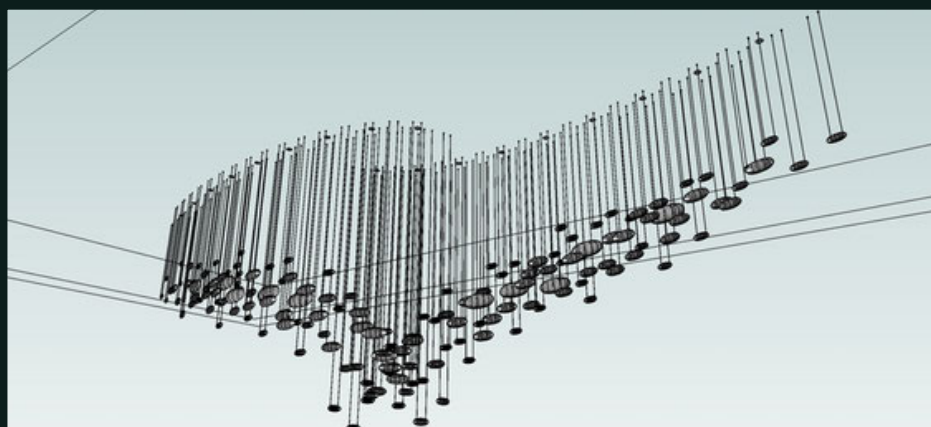
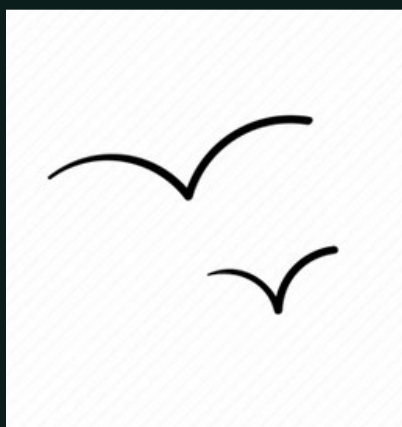
MIALUXY

















# PIANOPOLI SERIES



**THANH NGA LUXURY**

*Thanh Nga Luxury Restaurant,  
Ninh Bình, Việt Nam.*



# PIANOPOLI SERIES











MIALUXY LIGHTING  
CRYSTAL COLLECTIONS



MIALUXY

REGINA / ROLAND / ATHENA / EMERALD/ VESPER





*Mialuxy deeply values the origin and heritage of crystal artistry. For this reason, the Inspiration Collection can incorporate bespoke crystal pieces crafted by master crystal artisans from the Czech Republic—individuals who create extraordinary crystals found nowhere else in the world.*

*This collaboration ensures that every fixture in the Inspiration Collection is not merely a source of light, but a one-of-a-kind work of art, destined to become the focal point of any space while bringing enduring emotion and beauty to your living environment.*







MIAL-REGINA 6+6

- Dimension : H.60 D.63
- Bulbs : 12 E14
- Crystal : Scholer (Austria)/Thermex (Czech)
- Finishing : Clear/Gold Coating



MIALUXY

REGINA SERIES





*Mialuxy Lighting / Crystal Chandelier / [www.mialuxy.eu](http://www.mialuxy.eu)*

**MIAL-REGINA 8+4**

- Dimension : H.51 D.63
- Bulbs : 12 E14
- Crystal : Scholer (Austria)/Thermex (Czech)
- Finishing : Clear/Gold Coating



**MIALUXY**





MIAL-REGINA 12+6

- Dimension : H.93 D.86
- Bulbs : 18 E14
- Crystal : Scholer (Austria)/Thermex (Czech)
- Finishing : Clear/Gold Coating



MIALUXY





*Mialuxy Lighting / Crystal Chandelier / [www.mialuxy.eu](http://www.mialuxy.eu)*

MIAL-REGINA 10+5+5

- Dimension : H61 D.92
- Bulbs : 20 E14
- Crystal : Scholer (Austria)/Thermex (Czech)
- Finishing : Clear/Gold Coating



MIALUXY





*Mialuxy Lighting / Crystal Chandelier / [www.mialuxy.eu](http://www.mialuxy.eu)*

MIAL-REGINA 10

- Dimension : H.61 D.83
- Bulbs : 10 E14
- Crystal : Scholer (Austria)/Thermex (Czech)
- Finishing : Clear/Gold Coating



MIALUXY





### ROLAND SERIES

#### MIAL-ROLAND 8

- Dimension : H80cm, D.86cm
- Bulbs : 8 E14
- Crystal : Scholer (Austria)/Czech
- Finishing : Clear/Gold



MIALUXY





**MIAL-ROLAND 10+5**

- Dimension : H88cm, D.80cm
- Bulbs : 15 E14
- Crystal : Scholer (Austria)/Czech
- Finishing : Clear/Gold

*Mialuxy Lighting / Crystal Chandelier / [www.mialuxy.eu](http://www.mialuxy.eu)*



**MIALUXY**





### MIAL-ROLAND 30

- Dimension : H.180, D.88 cm
- Bulbs : 30 E14
- Crystal : Scholer (Austria)/Czech
- Finishing : Clear/Gold



MIALUXY





**MIAL-ROLAND 32**

- Dimension : H.176 D.110
- Bulbs : 16+8+8 E14
- Crystal : Scholer (Austria)/Czech
- Finishing : Clear/Gold







MIAL-ROLAND 36

- Dimension : H.175, D.140 :
- Bulbs 18+12+6 E14 : Scholer
- Crystal (Austria)/Czech :
- Finishing Clear/Gold

*Mialuxy Lighting / Crystal Chandelier / [www.mialuxy.eu](http://www.mialuxy.eu)*



*Mialuxy Lighting / Crystal Chandelier / [www.mialuxy.eu](http://www.mialuxy.eu)*



 **ttd group**  
Since 1992





MIAL-ATHENA 10+5  
- Dimennsion : H.80 D.82  
- Bulbs : 15 E14  
- Crystal : Czech  
- Finishing : Clear/Gold

*Mialuxy Lighting / Crystal Chandelier / [www.mialuxy.eu](http://www.mialuxy.eu)*



MIALUXY





MIAL-REGINA 12

- Dimension : H.46 D.75
- Bulbs : 12 E14
- Crystal : Scholer (Austria)/Thermex (Czech)
- Finishing : Clear/Gold Coating



MIALUXY



### EMERALD 17

A larger crystal chandelier

- Dimension : H.9000, D.2100 cm
- Bulbs : E14
- Crystal : Czech
- Finishing : Clear/Emerald/Gold



MIALUXY

EMERALD SERIES





*Mialuxy Lighting / Crystal Chandelier / [www.mialuxy.eu](http://www.mialuxy.eu)*



## VESPER CRYSTAL

Our Vesper crystal chandelier is inspired by the old and popular style of Baccarat chandeliers and elevated to the absolute highest quality of crystal manufacturing. The crystal arms, bowls and centre crystal pieces of this chandelier are all exclusively hand-blown and represent the absolute highest quality of Bohemian glassmaking.



### FINISHES:

- Shiny Gold / Matte Gold / Antique Gold -
- Shiny Silver / Matte Silver / Antique Silver
- Other finishes available on request



MIALUXY

VESPER SERIES





VESPER 12 Crystal chandelier 12  
lights color - Dimension : H.90,  
D.81 cm / 19 kg

- Bulbs
- Crystal







VESPER 12 M  
Crystal chandelier 12 lights color M  
- Dimension : H.90, D.81 cm / 19 kg  
- Bulbs : 12 x E14  
- Crystal : Czech

*Mialuxy Lighting / Crystal Chandelier / [www.mialuxy.eu](http://www.mialuxy.eu)*





VESPER 18  
Crystal chandelier 18 lights color  
- Dimension : H.90, D.90 cm / 26 kg  
- Bulbs : 18 x E14  
- Crystal : Czech







VESPER 24  
Crystal chandelier 24 lights clear  
- Dimension : H.98, D.105 cm / 35 kg  
- Bulbs : 24 x E14  
- Crystal : Czech

*Mialuxy Lighting / Crystal Chandelier / [www.mialuxy.eu](http://www.mialuxy.eu)*



MIALUXY





VESPER 16  
Crystal chandelier 16 lights clear  
- Dimension : L.115, W.80, H.129 cm / 40 kg  
- Bulbs : 16 x E14  
- Crystal : Czech





VESPER 16 Alpha  
Crystal chandelier 16 lights Alpha  
- Dimension : D.99, H.90 cm / 25 kg  
- Bulbs : 16 x E14  
- Crystal : Czech

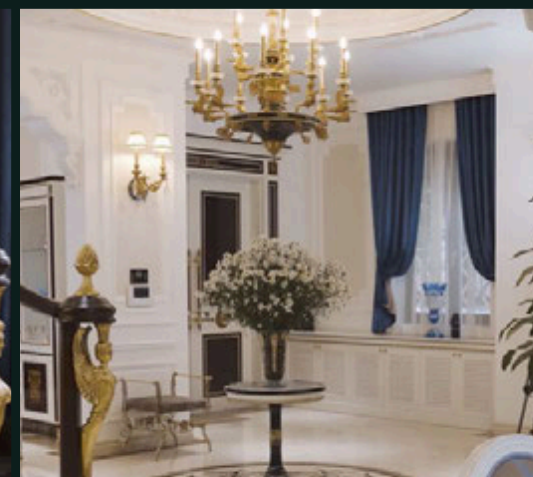
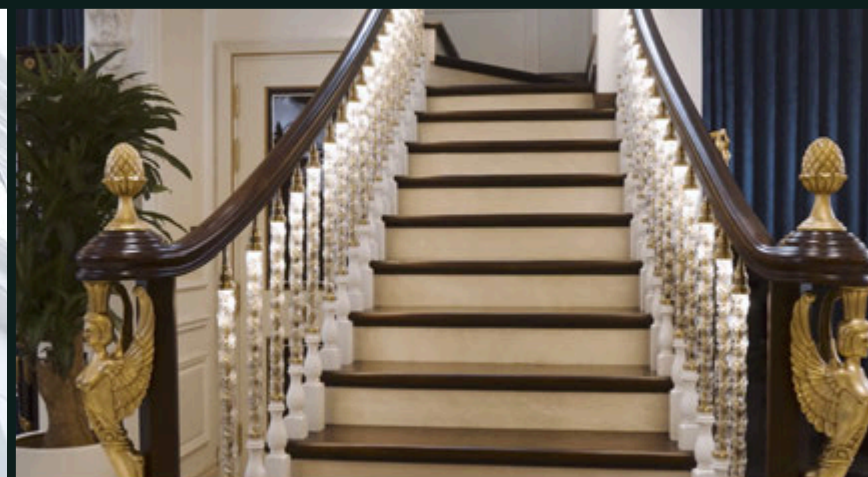
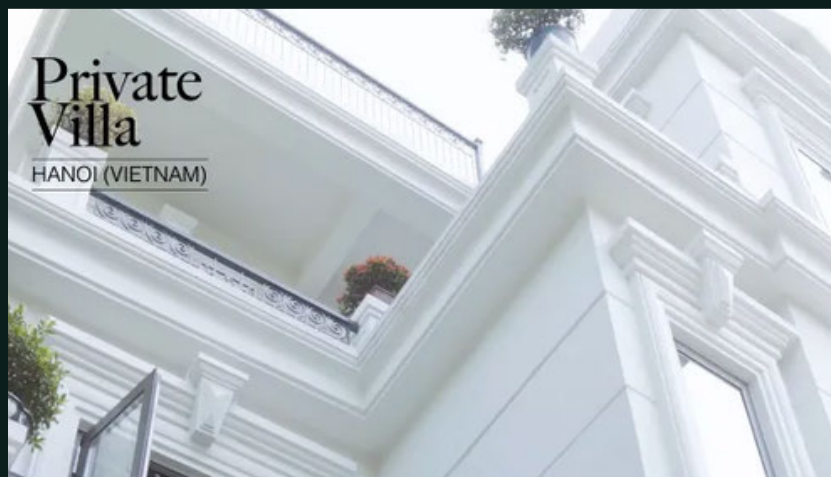
*Mialuxy Lighting / Crystal Chandelier / [www.mialuxy.eu](http://www.mialuxy.eu)*



MIALUXY



# SPECIAL PROJECTS

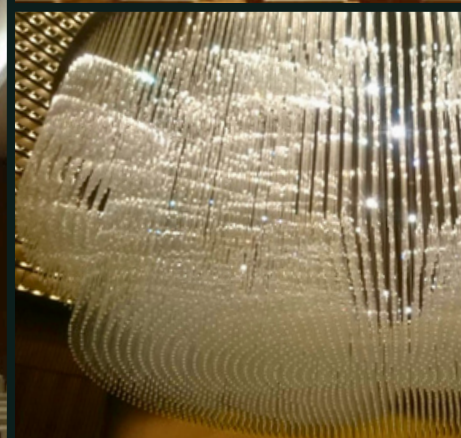
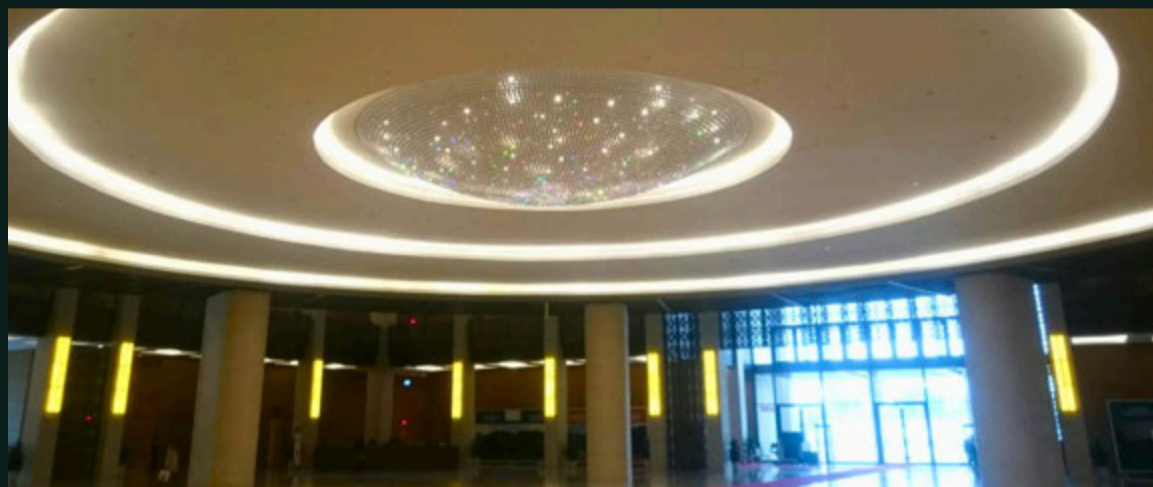


Designed and executed by TTD Group, the long-standing partner and exclusive distributor of MARINER in Vietnam.

This private villa, captivating and refined, is one of the latest distinctive projects featuring a unique crystal bar staircase, exclusively designed and crafted by Mialuxy.





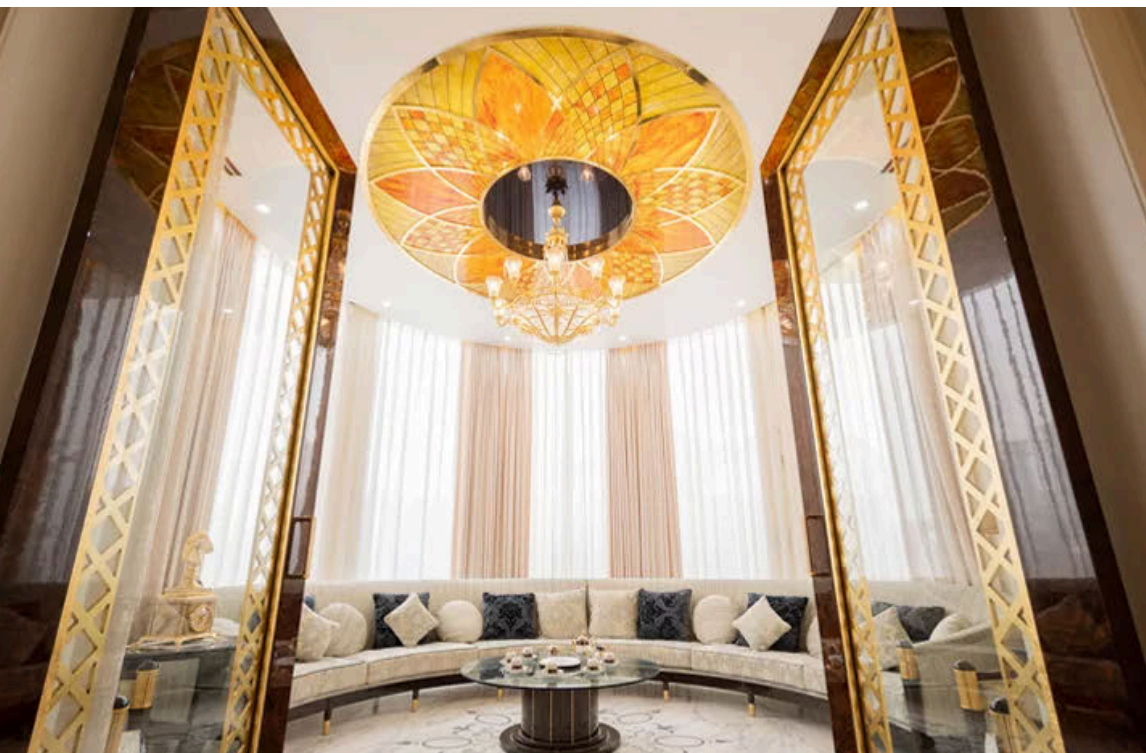


PRECIOSA CRYSTAL PENDANTS



*Dien Hong Hall, National Assembly Building of the Socialist Republic of Vietnam.*





ttd group  
Since 1992







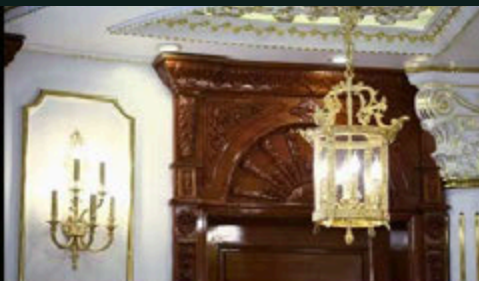




**PROJECT**



BIỆT THỰ CỔ ĐIỂN  
Đà Nẵng  
• BronceArt





## PROJECT



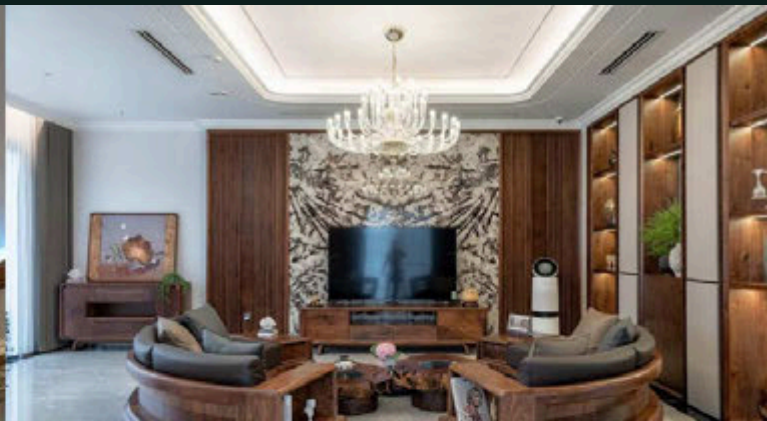
BIỆT THỰ CỔ ĐIỂN

Hà Nội

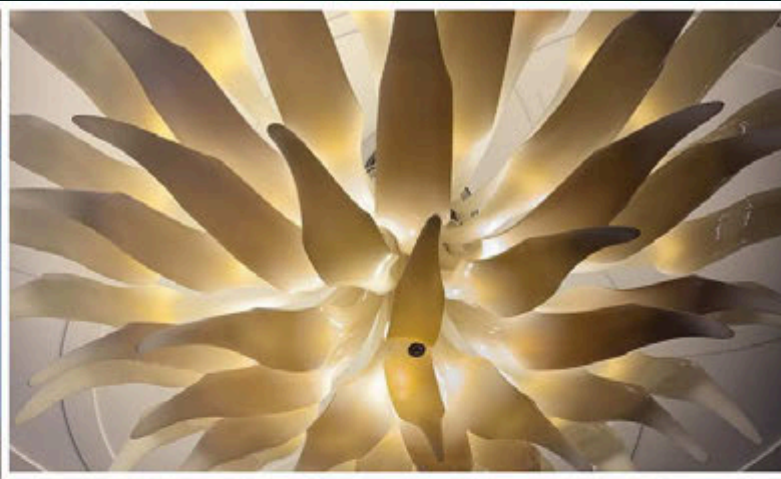
- Nội thất Asnaghi - Italy



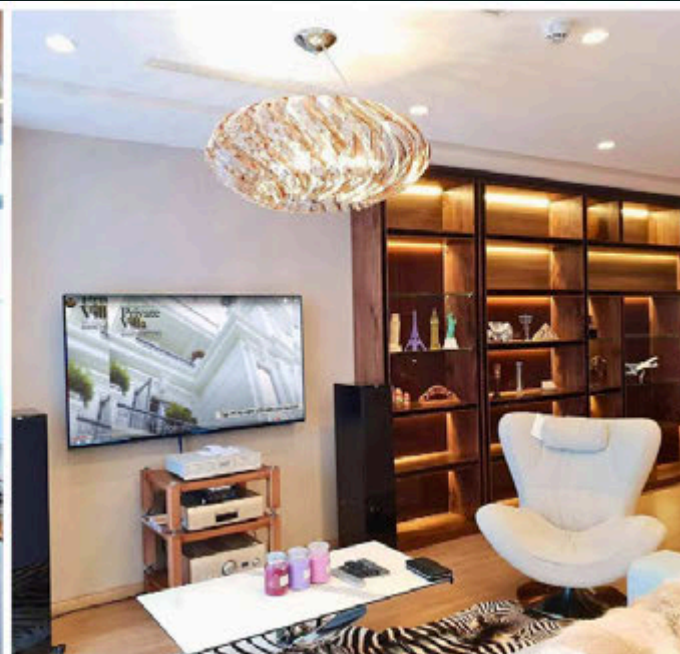
















MIALUXY